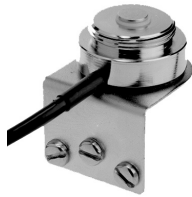




(B)MBM



TGBWP45

## (B)MBM Series

Black or chrome, 1-1/8"-18 thread; mirror bracket mount

Model	Length of Coax	Coax	Connector	Type
(B)MBM-NC	17'	RG-58A/U	None	N/A
(B)MBMC-NC	17'	RG-58/U	None	N/A
(B)MBM	17'	RG-58A/U	PL259	Solder
MBMBN	17'	RG-58/U	BNC	Crimp
(B)MBMC	17'	RG-58/U	TNC	Crimp
(B)MBMPL	17'	RG-58/U	Mini-UHF	Crimp

## TGBWP Series

1-1/8"-18 thread; trunk/hood groove bracket mount

Model	Length of Coax	Coax	Connector	Cable Exit Angle	Type
TGBWP45-NC	17'	RG-58A/U	None	45°	N/A
TGBWP45C-NC	17'	RG-58/U	None	45°	N/A
TGBWP45	17'	RG-58A/U	PL259	45°	Crimp
TGBWP45C	17'	RG-58/U	TNC Plug	45°	Crimp
TGBWP45PL	17'	RG-58/U	Mini-UHF	45°	Crimp
TGBWP45FFME	17'	RG-58/U	Female FME*	45°	Crimp
TGBWP45NCP	17'	RG-58/U	N	45°	Crimp

Prefix "B" indicates black.  
Connectors (if applicable) are shipped loose. Connectors may be attached upon request for an additional charge.