

| P/N  | APPLICABLE NOTE(S) | (Ø A)    | (Ø B) | CABLE TYPE         | FIGURE(S) |
|------|--------------------|----------|-------|--------------------|-----------|
| -1   | 1,2                | .143 MIN | .185  | Ø .141 S/R         | 1         |
| -1SF | 1,2                | .143 MIN | .185  | Ø .141 S/R         |           |
| -2   | 1,2                | .088 MIN | .185  | Ø .085 S/R         |           |
| -2SF | 1,2                | .088 MIN | .185  | Ø .085 S/R         |           |
| -3   | 1,2                | .143 MIN | .185  | Ø .141 MICROPOROUS | 2         |
| -3SF | 1,2                | .143 MIN | .185  | Ø .141 MICROPOROUS |           |
| -4   | 1,2,3              | .253 MIN | .340  | Ø .250 S/R         |           |
| -4SF | 1,2,3              | .253 MIN | .340  | Ø .250 S/R         |           |

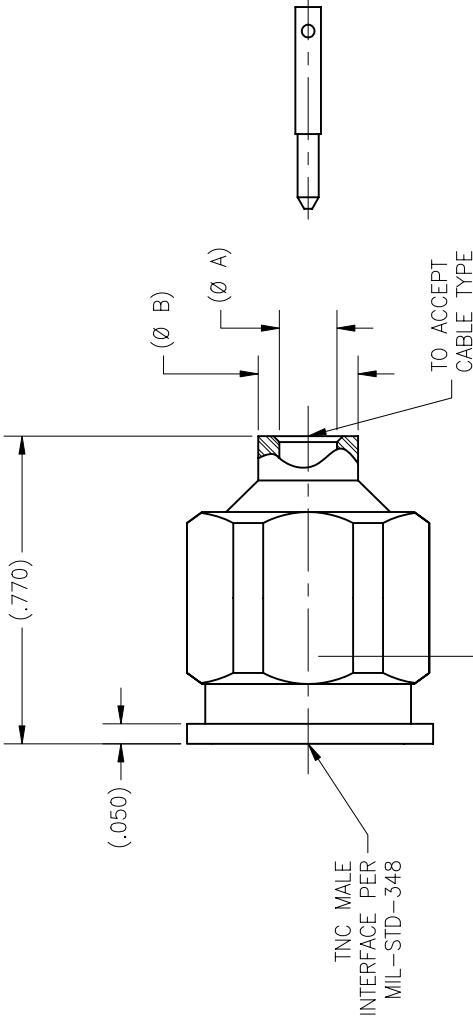


FIGURE 1

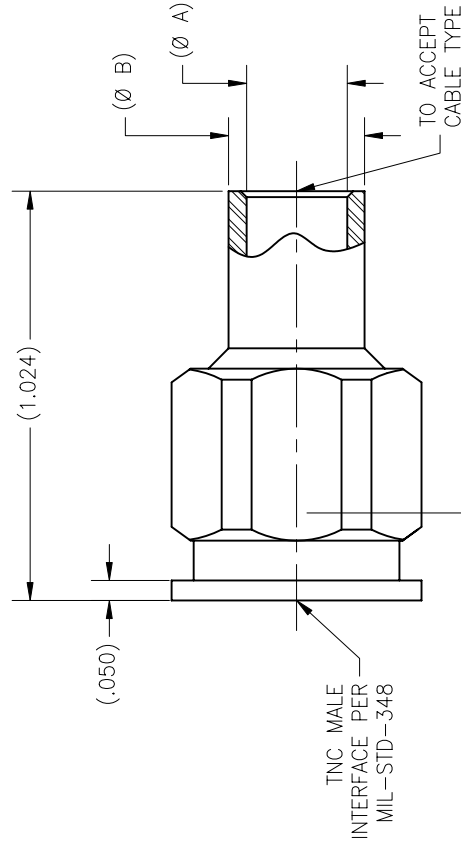


FIGURE 2

NOTES(S):

- MATERIAL(S):
  - BODY & COUPLING NUT: 303 SST PER ASTM A-582.
  - CENTER CONDUCTOR: BRASS ALLOY C360 PER ASTM B-16.
  - RETAINING RING: BeCu ALLOY C173 PER ASTM B-196.
  - INSULATOR: PTFE PER ASTM D-1710.
  - GASKET: SILICONE RUBBER PER ZZ-R-765.
- FINISH(ES):
  - COUPLING NUT: (FOR SF'S) PASSIVATED PER ASTM A-967. (FOR BASIC'S) GOLD PLATE PER ASTM B-488 OVER NICKEL PLATE PER AMS-QQ-N-290.
  - BODY & CENTER CONDUCTOR: GOLD PLATE PER ASTM B-488 OVER NICKEL PLATE PER AMS-QQ-N-290.
  - INSULATOR, GASKET & RETAINING RING: NONE
- CENTER CONDUCTOR WILL BE PACKAGED AND SHIPPED UNASSEMBLED.

| ZONE | REV | DESCRIPTION                 | DATE     | BY  |
|------|-----|-----------------------------|----------|-----|
| -    | B   | ECO 6947 (REDRAW USING CAD) | 02/11/97 | PRC |
| -    | C   | ECO 13094                   | 03.21.01 | AGS |
| -    | D   | ECO 14506 (RE-ACTIVATED)    | 05.09.02 | DKN |

| DRAWING NO. | REV. |
|-------------|------|
| 9009        | D    |

| SEE NOTES | SIZE | SEE NOTES | PROCUREMENT |
|-----------|------|-----------|-------------|
| -         | -    | -         | -           |

| MATERIAL  | DATE     | PROCUREMENT   |
|-----------|----------|---|
| Tensolite | 02/11/97 | HIGH PERFORMANCE CABLES & INTERCONNECT SYSTEMS Long Beach, California 90815 |

| APPROVAL INITIALS | DATE     | PROCUREMENT                           |
|-------------------|----------|---------------------------------------|
| PRC               | 02/11/97 | TNC MALE STRAIGHT TO SEMI-RIGID CABLE |

| CHECKED | SCALE | SUB-DIRECTOR/USERNAME | SHEET | OF |
|---------|-------|-----------------------|-------|----|
| ATV     | 6/1   | OL                    | 1     | 1  |

| ENGINEERING | SIZE     | CAGE CODE | DRAWING NO. | REV. |
|-------------|----------|-----------|-------------|------|
| ATV         | 12.06.02 | C         | 30990       | D    |

**NOTICE**  
 THIS DRAWING IS THE PROPERTY OF TENSOLITE, INC. AND IS NOT TO BE REPRODUCED, COPIED, OR TRANSMITTED IN ANY FORM OR BY ANY MEANS, ELECTRONIC OR MECHANICAL, INCLUDING PHOTOCOPYING, RECORDING, OR BY ANY INFORMATION STORAGE AND RETRIEVAL SYSTEM, WITHOUT THE WRITTEN PERMISSION OF TENSOLITE, INC. TENSOLITE, INC. IS NOT RESPONSIBLE FOR ANY ERRORS OR OMISSIONS IN THIS DRAWING. TENSOLITE, INC. IS NOT RESPONSIBLE FOR ANY DAMAGES, LOSSES, OR EXPENSES INCURRED BY ANY PARTY USING THIS DRAWING. TENSOLITE, INC. IS NOT RESPONSIBLE FOR ANY DAMAGES, LOSSES, OR EXPENSES INCURRED BY ANY PARTY USING THIS DRAWING.

**TOLERANCES AND NOTES EXCEPT AS NOTED**  
 DIMENSIONS ARE IN INCHES.  
 LINEAR .XX ±.015 ANGULAR ± 1/2  
 FRACTION ± 1/32  
 1. MACHINE FINISH  
 2. BREAK ALL SHARP EDGES .003 MAX.  
 3. MACHINED FILLETS .005 MAX.  
 4. MACHINED SURFACES SQUARE TO RESPECTIVE AXIS WITHIN .005 INCHES PER INCH.  
 5. .002 TYP. UNLESS OTHERWISE SPECIFIED.  
 6. DIMENSIONS TO BEAMS TO BE MOUNTED BEFORE PLATING.  
 7. DIMENSIONS TO BEAMS TO BE MOUNTED AFTER PLATING.  
 8. THREADS PER H-28.  
 9. DIMENSIONS TO BEAMS TO BE MOUNTED AFTER PLATING.  
 10. REMOVE ALL BURRS.