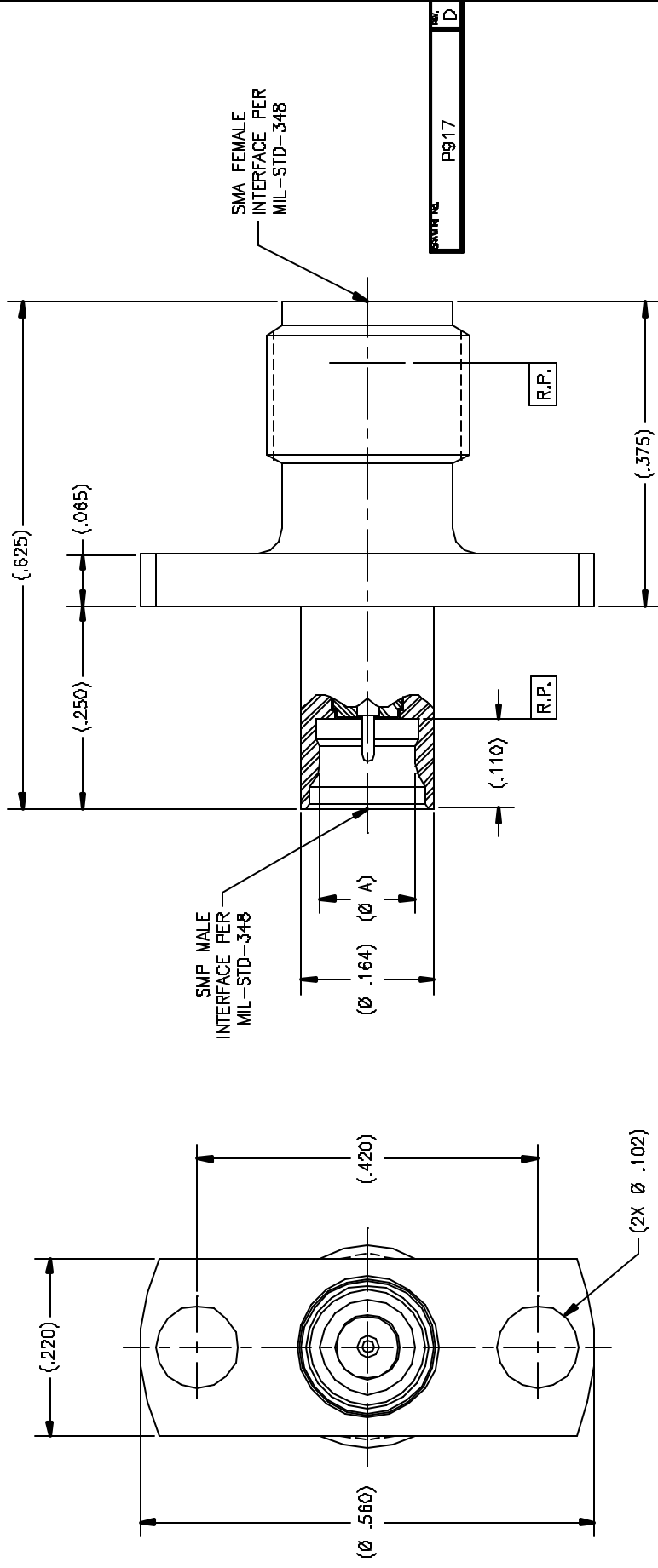


P/N	APPLICABLE NOTE(S)	(Ø A)
-1CCSF	1,2,3	.116
-2CCSF	1,2,3	.120
-3CCSF	1,2,3	.125

ZONE	REV	DESCRIPTION	DATE	BY
-	D	ECQ 12657	12.04.00	P.MAO



NOTE(S):

- MATERIAL(S):
 - BODY: 303 SST PER ASTM A-582
 - CENTER CONDUCTOR: BeCu ALLOY PER ASTM B-196 OR B-197
 - INSULATOR: PTFE PER ASTM D-1710
- FINISH(ES):
 - BODY: PASSIVATE PER ASTM A-967
 - CENTER CONDUCTOR: GOLD PLATE PER ASTM B-488 OVER NICKEL PLATE PER AMS-QQ-N-29D
 - INSULATOR: NONE
- ELECTRICAL PERFORMANCE(S):
 - FREQUENCY RANGE: DC-18.0 GHz.
 - R.F. INSERTION LOSS: 0.25dB Max to 18.0 GHz.
 - VSWR: 1.15:1 Max to 18.0 GHz.

TOLERANCES AND NOTES EXCEPT AS NOTED DIMENSIONS ARE IN INCHES UNLESS OTHERWISE SPECIFIED
 FINISH: 1/28
 1. MACHINE FINISH: 1/28
 2. DEBurr ALL SHARP EDGES AND CORNERS
 3. MACHINED SURFACE: 0.005 MAX. SURFACE FINISH
 4. PEEK WITH 10% GLASS FIBER REINFORCED
 5. MACHINED SURFACE: 0.005 MAX. SURFACE FINISH
 6. DIMENSIONS TO BE MET EXCEPT PLATING
 7. TOLERANCES TO BE MET EXCEPT PLATING
 8. TYPICAL DIMENSIONS IN INCHES
 9. DRAWING DIMENSIONS IN INCHES
 10. REFER TO ALL NOTES

NOTICE
 THE DRAWING IS THE PROPERTY OF TENSOLITE CORPORATION. IT IS TO BE USED ONLY FOR THE PURPOSES SPECIFIED HEREIN. IT IS NOT TO BE REPRODUCED, COPIED, OR TRANSMITTED IN ANY FORM OR BY ANY MEANS, ELECTRONIC OR MECHANICAL, INCLUDING PHOTOCOPYING, RECORDING, OR BY ANY INFORMATION STORAGE AND RETRIEVAL SYSTEM, WITHOUT THE WRITTEN PERMISSION OF TENSOLITE CORPORATION. TENSOLITE CORPORATION, 10000 TENSOLITE DRIVE, SAN DIEGO, CALIFORNIA 92126

SEE NOTES	SEE NOTES
GENERAL	REVISION
APPROVAL INITIALS	DATE
DESIGNED BY: P.MAO	12.04.00
ENGINEERED BY: P.MAO	12.04.00
CHECKED BY: ATY	12.04.00
Tensolite HIGH PERFORMANCE CABLES & INTERCONNECT SYSTEMS 10700 Elgin, California 92015	
TITLE: SMP MALE TO SMA FEMALE 2 HOLE FLANGE MOUNT, ADAPTER	
SCALE: 10:1 DRAWING NO: 01PXXXXV01P917 SHEET 1 OF 1	
SIZE: C 50990 DRAWING NO: P917	