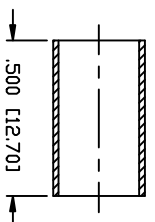
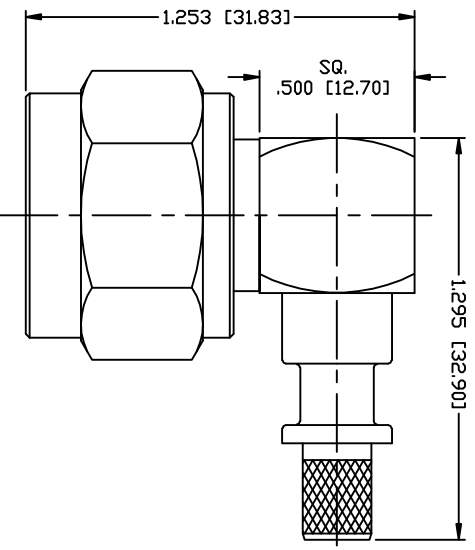
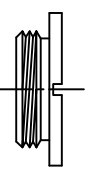
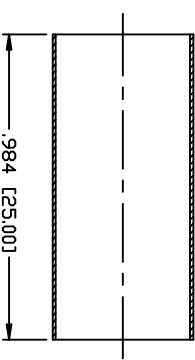


PART NO. **RFN-1009-X-WB**

REV	DESCRIPTION	DNW	DATE	APPROVED
-	ENGINEERING RELEASE	CZS	11/08/11	JDMc



RECOMMENDED CRIMP DIE: .255'



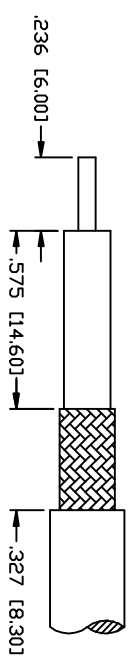
SPECIFICATIONS:

IMPEDANCE: 50 Ohms
 FREQUENCY RANGE: 0-11 GHz
 INSERTION LOSS: .06 dB Max. X $\sqrt{\text{GHz}}$
 WORKING VOLTAGE: 1k V rms @ sea level
 TEMPERATURE RANGE: -65°C TO 85°C
 INSULATION RESISTANCE: 5k M Ohms min.
 FOR RG-8/X, BELDEN 9258, MAXRAD MBX-100 &
 MBX-1000, MICRO 8/U, REMEE 1600, SAXTON 8315 &
 TIMES LMR-240 & LMR-240 ULTRAFLEX CABLE

#	DESCRIPTION	QTY	MATERIAL	FINISH
11	TUBING	1	HEAT SHRINK	---
10	FERRULE	1	BRASS	WHITE BRONZE, 80/20
9	BACK NUT	1	BRASS	WHITE BRONZE, 80/20
8	SHELL	1	BRASS	WHITE BRONZE, 80/20
7	GASKET	1	SI RUBBER	---
6	RETAINING RING	1	BRASS	WHITE BRONZE, 80/20
5	GROUND RING	1	BRASS	WHITE BRONZE, 80/20
4	INSULATOR	1	PTFE	---
3	PIN	1	BRASS	GOLD, 5/2
2	BODY	1	BRASS	WHITE BRONZE, 80/20
1	BODY	1	BRASS	WHITE BRONZE, 80/20

CUSTOMER
 OUTLINE DRAWING
 ALL DIMENSIONS
 ARE REFERENCE ONLY
 UNLESS OTHERWISE SPECIFIED:
 DIMENSIONS ARE IN INCHES
 AND [MILLIMETERS]

DRAWN C. ZUNIGA	11/08/11
CHECKED	
DRG DRAWN 01560	11/03/11



RECOMMENDED STRIPPING DIMENSIONS

NOTE: ATTACH CABLE TO CONNECTOR BY
 SOLDERING THE CABLE INNER CONDUCTOR
 TO THE PIN SLOT INSIDE THE CONNECTOR



N PLUG, CRIMP
 RIGHT ANGLE

PROPRIETARY AND CONFIDENTIAL THIS DRAWING CONTAINS INFORMATION PROPRIETARY TO RF INDUSTRIES. ANY UNAUTHORIZED USE OF THIS DRAWING IS EXPRESSLY PROHIBITED WITHOUT WRITTEN PERMISSION FROM RF INDUSTRIES. ANY VIOLATION IS PUNISHABLE UNDER U.S. COPYRIGHT LAWS.	7610 MIRAMAR RD. SAN DIEGO, CA 92126 (658) 549-6340 (658) 549-6345 FAX		
SIZE: Δ	CABLE GROUP: X	DWG NO.: RFN-1009-X-WB	REV: ---
SCALE: NTS	ENGINEERING ID: 01560	SHEET 1 OF 1	