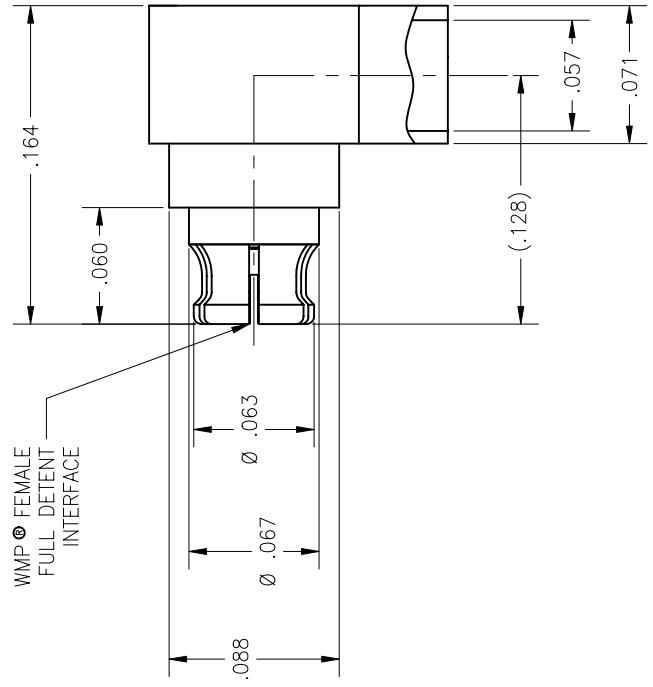
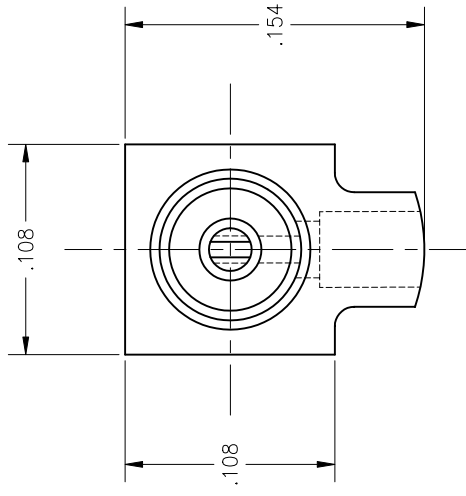
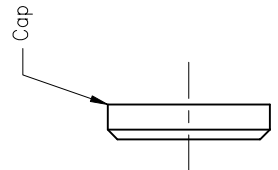


P/N
-1CC



WMP® FEMALE FULL DETENT INTERFACE



Note:
Cap to be packaged and shipped unassembled.
WMP® is a registered trademark of Carlisle Interconnect Technologies.

REVISIONS		DATE	BY
ZONE	REV	DESCRIPTION	
-	P1	Add register mark, chg interf fig.	DKN
-	-	Initial Release	pcv

MATERIAL:

Body, Center Conductor & Cap:
BeCu alloy per ASTM B-196
Insulator:
PTFE per ASTM D-1710

ELECTRICAL:

Impedance: 50 Ohms Norm.
Freq. Range: DC TO 18 GHz
VSWR: 1.10 + .010 x f (GHz)
Insertion Loss: .04 V_f GHz
Working Voltage: 600 Vrms @ Sea Level
Dielectric Withstand Voltage: 500 V rms
RF HiPot Voltage: 325 Vrms Min @ 5MHz
Corona Level: 190 Vrms @ 70,000 ft
Insulation Resistance: 5,000 Mohms
RF Leakage: -(65 - f GHz) dB
Contact Resistance:
Center Conductor: 4.0 Milliohms Max

MECHANICAL:

Interface Dimensions:
Carlisle IT WS134
Connector Durability:
100 Cycles
Center Contact Retention:
1.5 lbs Min Axial
N/A Radial
Force to Engage and Disengage:

ENVIRONMENTAL:

Temp. Range: -65°C to +125°C
Thermal Shock:
MIL-STD-202, Method 107, Test Cond. B
Moisture Resistance:
MIL-STD-202, Method 106. Insulation resistance at least 200 MegaOhms within 5 minutes after removal from humidity
Corrosion:
MIL-STD-202, Method 101, Test Cond. B
Vibration:
MIL-STD-202, Method 204, Test Cond. D
Shock:
MIL-STD-202, Method 213, Test Cond. I

FINISH:

Body & Center Conductor:
Gold plate per ASTM B-488 over nickel underplate per AMS-QQ-N-290

APPLICABLE CARLISLE IT DOCUMENTS

WORK STD	PROD INST	ASSY INST
NA	NA	NA

TOLERANCES AND NOTES EXCEPT AS NOTED

- DIMENSIONS ARE IN INCHES:
FRACTION ± 1/32
DECIMAL ± 0.005
ANGULAR ± 1/2°
1. MACHINE FINISH: 63/ RMS
 2. BREAK ALL SHARP EDGES .003 MAX.
 3. MACHINED FILLETS R.005 MAX.
 4. AXIS WITHIN .005 INCHES PER INCH
 5. MACHINED DIAMETERS CONCENTRIC WITHIN .005 INCHES
 6. DIMENSIONS TO BE MET BEFORE PLATING.
 7. THREADS ALL UNLESS NOTED OTHERWISE
 8. REMOVE FRAMED EDGES ON TETON.
 9. REMOVE ALL BURRS.

MATERIAL	DATE	SIZE	SPECIFICATION	PROCUREMENT
DKN	03.23.10			
APPROVAL INITIALS				
DRAWN BY				
CHECKED BY				
TEST ENGR				
QUALITY				
DESIGN ENGR				
MFG ENGR				

CARLISLE Interconnect Technologies
Long Beach, CA 90815

TITLE: WMP® FEMALE RIGHT ANGLE TO TLL26-1047 FLEX CABLE
SCALE: 20:1
SUB-DIRECTORY/FILENAME: OL_

SIZE: CAGE CODE: WP105
SHEET: 1 OF 1
DRAWING NO.: WP105