

## Industrial Scientific & Medical (ISM)

Empower your next breakthrough with cutting-edge RF solutions built for performance, precision, and reliability. From industrial heating to advanced medical systems and scientific research, our curated portfolio from industry leading manufacturers, delivers the power behind innovation. As your trusted source, Richardson RFPD can connect you with the technologies and expertise enabling next-gen designs.



**902 - 928 MHz, 2.5 kW,**  
Solid-State Generator



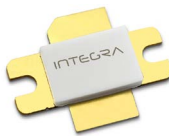
**2.45 GHz, 12 dBm,**  
GaAs LNA



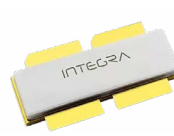
**2.4 - 2.5 GHz, 1.5 kW,**  
GaN Power Amplifier



**3 GHz, 2.7 kW,**  
GaN Power Amplifier



**3 GHz, 5 kW,**  
GaN Power Amplifier



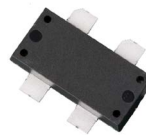
**1.3 GHz, 3.6 kW,**  
GaN Power Amplifier



**DC - 2700 MHz, 300 W,**  
GaN Power Amplifier



**2.4 - 2.5 GHz, 300 W,**  
GaN Power Amplifier



**900 - 930 GHz, 1.4kW,**  
GaN Power Amplifier



**3 - 700 MHz, 3 kW,**  
GaN Power Amplifier



**DC - 2.7 GHz, 50 W,**  
GaN Power Amplifier



**High Power RF Energy**  
Circulators

