

Test & Measurement

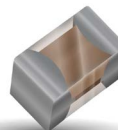
In today's fast-paced world of RF and microwave innovation, accurate testing is everything. Richardson RFPD provides components that power reliable, high-performance test and measurement systems—helping you accelerate development, ensure compliance, and stay ahead of the competition.



**Solid State Broadband
High Power Amplifiers**



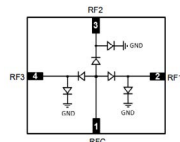
**DC - 40 GHz, 0402 EIA,
125 mW, SMT Resistors**



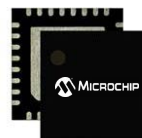
**DC - 40 GHz, 0.5 dB,
LSB Digital Attenuator**



**.05 - 67 GHz, SPDT
PIN Diode Switch**



**DC - 24 GHz, 0.5 W,
Power Amplifier**



**100-2000 MHz, 20 fs
Phase Jitter, 20 ppm,
Programmable XO**



**9 kHz - 52 GHz,
UltraCMOS® SP4T
RF Switch - 3x3mm LGA**



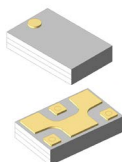
**9 kHz - 67 GHz,
UltraCMOS® SP4T RF
Switch - Flip-Chip Die**



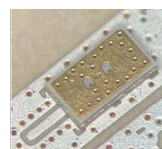
**4, 10 Output,
Any-Frequency Clock
Generator Family**



**DC - 40 GHz, Resistive
2-Way Splitters for Data
Converter Matching**



**20 - 100 GHz, mmWave
Mini-Xinger Via Jumper**



**4.7 T Room-Temp,
Superconductor-Like
Preamp**

